



Authentic - Ethical - Natural - Sustainable

---

# LIMAIA COLLECTION

---

Spring-summer 2025

WELCOME



[www.limaiaparis.com](http://www.limaiaparis.com)





## Our expertise

Valuing handmade work & taking care of every detail!

**R**affia is a plant fiber that has been used for centuries in many cultures to make durable and ecological products. Raffia extraction is done manually through artisanal techniques, ensuring a low impact on the environment.

In addition to its ecological aspect, raffia is also known for its strength and durability. Products made from raffia are appreciated for their longevity and their ability to withstand daily wear and tear.

The exploitation of raffia also has social and economic benefits. Harvesting palm leaves and processing the fiber is often done by local communities, providing them with additional income. Furthermore, the maintenance and regeneration of raffia forests contribute to the preservation of biodiversity and ecological balance. In conclusion, raffia offers an ecological and sustainable alternative for the production of various products. Its use supports local communities while preserving the environment.



The raffia is a completely environmentally friendly product.



## Our commitments

**L**imaia Paris is not only a brand, but also a dedicated company that actively supports underprivileged Malagasy women. Through various initiatives, we provide employment and training opportunities to disadvantaged women in Madagascar. By enabling them to acquire professional skills, they can independently provide for their own needs and those of their families.



# BAGS & HATS Collection 2025







**SANDRINA**

**REF : LM0017A**

Bag size :

L : 75 x 35 x 40 cm	Excl.VAT : 65€	86 hours craft
M : 56 x 28 x 30 cm	Excl.VAT : 42€	66 hours craft

Unlined, closed by a magnetic button.



**DANIELA**

**REF : LM0015A**

Bag size : 66 x 32 x 25 cm

Unlined, closed by a magnetic button.

75 hours craft



**DANIELA**

**REF : LM0015B**

Bag size : 66 x 32 x 25 cm

Unlined, closed by a magnetic button.

75 hours craft



**ALIX**

REF : LM0150

Bag size : 64 x 25 x 20 cm

Unlined, closed by a magnetic button.

68 hours craft



**LUNA**

REF : LM0019

Bag size : 35 x 28 x 17 cm

Unlined.

78 hours craft



**MAYA - L**

REF : LM0058L

Bag size : 50 x 31 x 26 cm

Unlined, closed by a magnetic button, removable handles in raffia.

75 hours craft



**MAYA - M**

REF : LM0058M

Bag size : 32 x 20 x 16 cm

Unlined, closed by a magnetic button, removable handles in raffia.

50 hours craft





**HOLY**

**REF : LM0072**

Bag size : 60 x 32 x 15 cm  
Unlined, closed by a magnetic button.  
68 hours craft



**HANNA**

**REF : LM0130**

Bag size : 50 x 30 x 25 cm  
Unlined, closed by a magnetic button and  
handles in raffia.  
60 hours craft



**NIRY**

**REF : LM0016**

Bag size : diameter of 44 cm  
Unlined, closed by a magnetic button.  
78 hours craft



**VERRO**

**REF : LM0069**

Bag size : 54 x 30 x 22 cm  
Unlined, closed by a magnetic button.  
70 hours craft





### HASINA - L

REF : LM0040A

Bag size : 48 x 34 x 22 cm  
Unlined, closed by a magnetic button.  
62 hours craft



### HASINA - M

REF : LM0040B

Bag size : 32 x 24 x 15 cm  
Unlined, closed by a magnetic button.  
44 hours craft



### HARY

REF : LM0028

Bag size : diameter of 40 cm  
Unlined, closed by a magnetic button.  
72 hours craft



### TANIA

REF : LM0101

Bag size : 52 x 50 cm  
Lined with a removable cotton pouch.  
42 hours craft



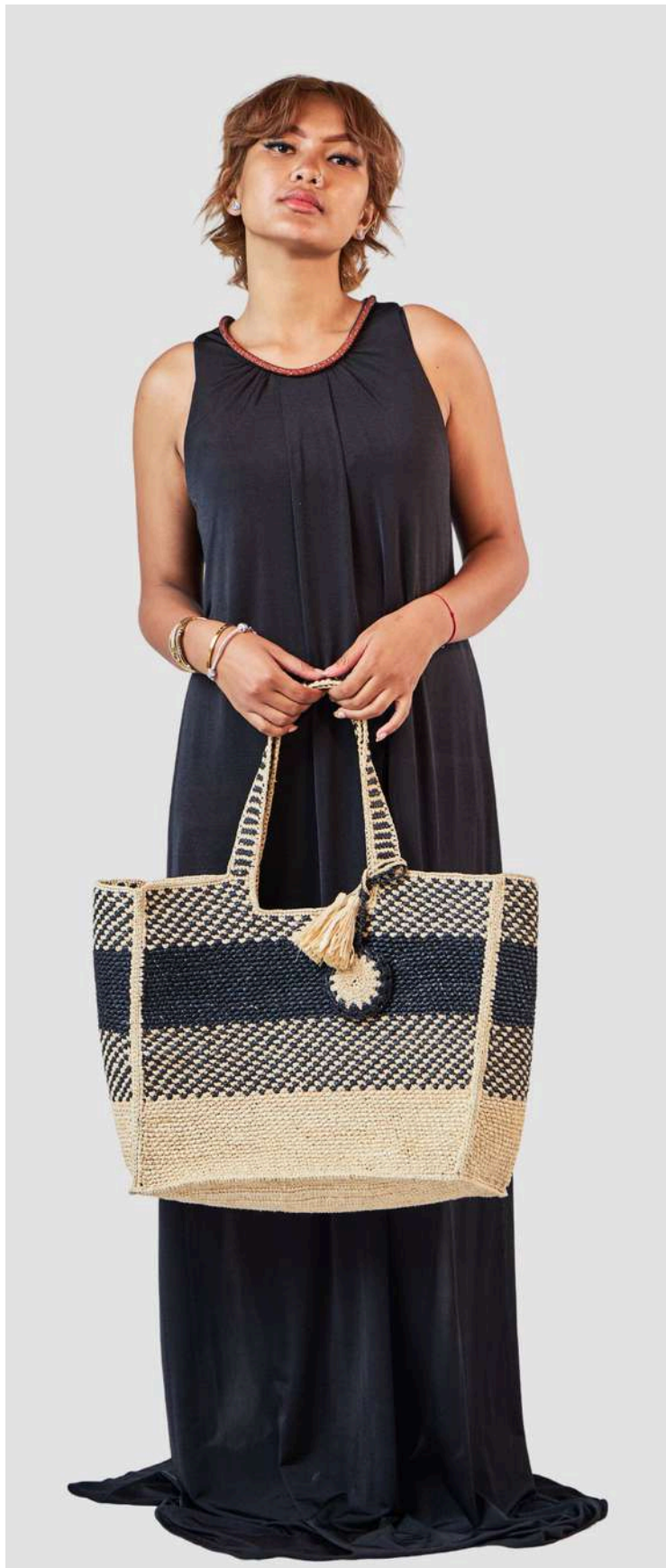
## ARIANA - BAG

Unlined, closed by a magnetic button and inner pocket in raffia.

Bag size :

L : 40 x 36 x 15 cm

M : 30 x 26 x 11 cm



## ARIANA - L

REF : LM0091A



## ARIANA - L

REF : LM0090A



## ARIANA - M

REF : LM0090B



## IRENE

REF : LM0131

Bag size : 34 x 22 x 12 cm

Unlined,

70 hours craft

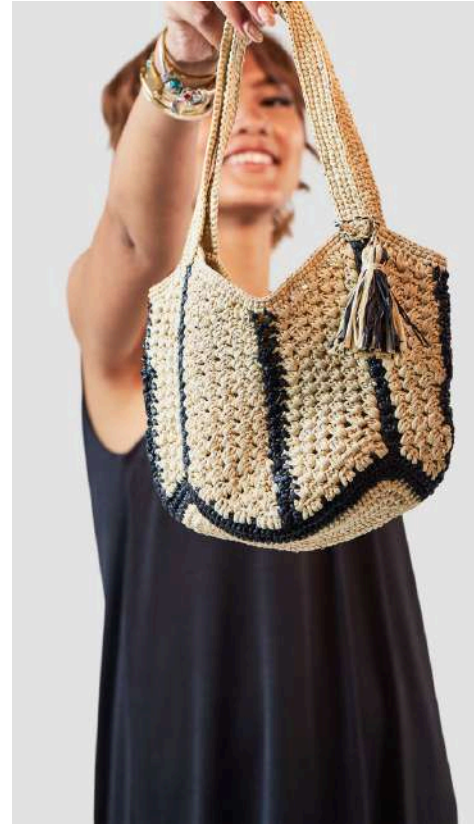




**TIA - L**  
REF : LM0096A  
72 hours craft



**TIA - M**  
REF : LM0096B  
62 hours craft



**TIA - S**  
REF : LM0096C  
42 hours craft

**TINA / TIA BAG**

Unlined, with removable pompon.

Bag size :

L : 58 x 28 x 30 cm

M : 40 x 26 x 20 cm

S : 28 x 17 x 10 cm



**TINA - L**  
REF : LM0097A  
80 hours craft



**TINA - S**  
REF : LM0097C  
50 hours craft



**TINA - M**  
REF : LM0097B  
70 hours craft





**RAVO**

**REF : LM0013**

Bag size : 70 x 35 x 33 cm  
Unlined, closed by a magnetic button.  
Removable shoulder straps in raffia.  
102 hours craft



**ANNIE**

**REF : LM0042**

Bag size : 53 x 30 x 22 cm  
Unlined, closed by a magnetic button.  
78 hours craft



**ANNA**

**REF : LM0089**

Bag size : 60 x 36 x 22 cm  
Unlined, closed by a magnetic button.  
90 hours craft



**NIVO**

**REF : LM0074**

Bag size : 62 x 30 x 25 cm  
Unlined.  
72 hours craft



### ALEX - BAG

Unlined, closed by magnetic button.

Bag size :

L : 56 x 36 x 34 cm

M : 36 x 24 x 18 cm



**ALEX - L**

REF : LM0098C

75 hours craft

**ALEX - M**

REF : LM0098E

55 hours craft

### NASSIA - BAG

Unlined, closed by a magnetic button, removable handles in raffia.

Bag size :

L : 70 x 35 x 33 cm

M : 60 x 28 x 20 cm



**NASSIA - L**

REF : LM0079B

80 hours craft

**NASSIA - M**

REF : LM0079A

65 hours craft



**ALEX - L**

80 hours craft

**ALEX - M**

REF : LM0098B

62 hours craft



**MIORA**

REF : LM0100

Bag size : 53 x 24 x 25 cm

Unlined, closed by magnetic button.

70 hours craft





**NOMENA - L**

**REF : LM0059E**

Bag size : 52 x 30 x 20 cm  
Unlined, closed by a magnetic button.

60 hours craft



**AUDE**

**REF : LM0085**

Bag size : 55 x 30 x 26 cm  
Cotton lining, inner zipped pocket,  
closed by a magnetic button.

75 hours craft



**ARIA**

**REF : LM0088**

Bag size : 52 x 31 x 10 cm  
Unlined, outside pocket closed by a magnetic button.

68 hours craft



**ROMINA**

**REF : LM0095**

Bag size : 53 x 48 x 25 cm  
Unlined, zip closure.

75 hours craft





**BERTHA - L**

**REF : LM0021A**

Bag size : 50 x 30 x 20 cm  
Unlined, closed by magnetic button  
and with removable pompon.

75 hours craft



**BERTHA - M**

**REF : LM0021B**

Bag size : 40 x 22 x 15 cm  
Unlined, closed by magnetic button  
and with removable pompon.

55 hours craft



**AYA**

**REF : LM0092**

Bag size : 60 x 35 x 26 cm  
Unlined, closed by a magnetic button.

78 hours craft





**JADE**

**REF : LM0014**

Bag size : 22 x 20 x 05 cm  
 Unlined, closed by a magnetic button.  
 Removable shoulder straps in raffia.

44 hours craft



**JUSTINE**

**REF : LM0006**

Bag size : 45 x 32 x 14 cm  
 Unlined, closed by a magnetic button.

68 hours craft



**JEANNE**

**REF : LM0039**

Bag size : 46 x 30 x 25 cm  
 Unlined, closed by a magnetic button.

71 hours craft



**JULIE**

**REF : LM0051**

Bag size : 39 x 40 cm  
 Unlined, inside clutch bag.

55 hours craft





**VOLA**

**REF : LM0110**

Bag size : 52 x 35 x 25 cm

Unlined, closed by magnetic button, with removable pompon and small clutch bag.

68 hours craft



**KOLOINA**

**REF : LM0054**

Bag size : 50 x 28 x 25 cm

Unlined, closed by a magnetic button.

72 hours craft



**DELPHINE**

**REF : LM0036**

Bag size : 50 x 34 x 22 cm

Unlined, closed with a raffia strap.

68 hours craft



**ANOUCK**

**REF : LM0093**

Bag size : 60 x 36 x 26 cm

Unlined, closed by a magnetic button.

70 hours craft





**CLARA**

**REF : LM0064**

Bag size : 30 x 28 x 04 cm  
Unlined, closed by a magnetic button.  
Leather handles.



**SAHOLY**

**REF : LM0024**

Bag size : 30 x 26 cm  
Cotton lining, closed by a magnetic button.



**NOELINE**

**REF : LM0060**

Bag size : 30 x 26 cm  
Unlined, closed by a magnetic button.  
Removable shoulder straps in raffia.



**SONIA**

**REF : LM0046**

Bag size : 25 x 18 x 09 cm  
Unlined, closed by a magnetic button.



**SARAH**

**REF : LM0132**

Bag size : 28 x 14 x 6 cm  
Unlined, closed by a magnetic button.



**JOELLE**

**REF : LM0112**

Bag size : 40 x 33 x 19 cm  
Cotton lining, inner pocket, closed by magnetic button, removable shoulder straps in raffia.



**NAZIA**

**REF : LM0082**

Bag size : 26 x 20 x 11 cm  
Unlined, closed by a magnetic button.  
Removable shoulder straps in raffia.



**ROVA**

**REF : LM0070**

Bag size : 34 x 24 x 15 cm  
Unlined, closed by a magnetic button.



**CLEA**

**REF : LM0094**

Bag size : 26 x 20 x 06 cm  
Cotton lining, closed by a magnetic button.





**DORIS**

REF : LM0133

Bag size : 24 x 14 x 6 cm  
Unlined, closed by a magnetic button.  
Removable shoulder straps in raffia.



**YASMINE**

REF : LM0103

Bag size : 25 x 22 x 18 cm  
Unlined, closed by a magnetic button.  
Removable shoulder straps in raffia.



**CARINE**

REF : LM0073

Bag size : 38 x 40 x 15 cm  
Unlined.



**ALBA M**

REF : LM0038A

Bag size : 46 x 28 x 22 cm  
Unlined, closed by a magnetic button.  
Removable shoulder straps in raffia.



**ALBA-S**

REF : LM0038B

Bag size : 26 x 14 x 10 cm  
Unlined, closed by a magnetic button.  
Removable shoulder straps in raffia.



**ADELINE**

REF : LM0052

Bag size : 26 x 23 x 10 cm  
Unlined, closed by a magnetic button.



**OLGA**

REF : LM0134

Bag size : 30 x 20  
Unlined, closed by a magnetic button.



**FARASOA**

REF : LM0078

Bag size : 30 x 25 x 10 cm  
Unlined, closed by a magnetic button.



**DIANA**

REF : LM0135

Bag size : 23 x 15 x 3 cm  
otton lining, zip closure.





**AMINA**

REF : LM0136

Bag size : 29 x 21 x 7 cm  
Cotton lining, zip closure.



**LARA**

REF : LM0137

Bag size : 20 x 12 x 3 cm  
Unlined, closed by a magnetic button.



**ALISSON**

REF : LM0138

Bag size : 34 x 22 x 8 cm  
Unlined, closed by a magnetic button.



**LOUISE**

REF : LM0139

Bag size : 35 x 22 x 6 cm  
Unlined, closed by a magnetic button.



**BIANCA**

REF : LM0087

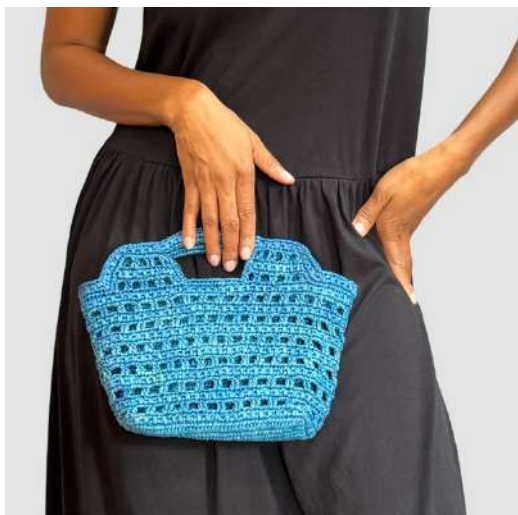
Bag size : 36 x 24 x 15 cm  
Unlined, closed by a magnetic button, with removable pompon.



**LESLIE**

REF : LM0140

Bag size : 38 x 14 x 10 cm  
Unlined, closed by a magnetic button.



**NANCY**

REF : LM0141

Bag size : 30 x 18 x 6 cm  
Unlined with removable pouch.



**EMMA**

REF : LM0030

Bag size : 26 x 30 x 11 cm  
Unlined, leather handles.



**ELLA**

REF : LM0142

Bag size : 40 x 20 x 12 cm  
Unlined, leather handles.





**MINO**  
REF : LM0084

Bag size : 19 x 15 x 08cm  
Cotton lining, closed by a magnetic button.



**AINA**  
REF : LM0044

Bag size : 20 x 18 x 15 cm  
Unlined, closed by a magnetic button.



**DINA**  
REF : LM0108

Bag size : 25 x 15 x 02 cm  
Unlined, closed by a magnetic button.



**LALAINA**  
REF : LM0026B

Bag size : 29 x 30 cm  
Unlined with removable pouch



**ALICE**  
REF : LM0111

Bag size : 22 x 16 x 05 cm  
Cotton lining, closed by clasp.



**LOLA**  
REF : LM0106

Bag size : 21 x 13 x 05 cm  
Unlined, closed by a magnetic button.



**PATHY**  
REF : LM0151

Bag size : 30 x 11 cm  
Cotton lining, closed by a magnetic button.



**CLAIRE**  
REF : LM0121

Bag size : 27 x 14 x 04 cm  
Cotton lining, closed by a magnetic button.



**NIRINA**  
REF : LM0033

Bag size : 17 x 11 x 08 cm  
Cotton lining, closed by a magnetic button.





**MARIE**

REF : LM0146

Bag size : 46 x 23  
Unlined, closed by a magnetic button.



**MELISSA**

REF : LM0102

Bag size : 21 x 21 x 10 cm  
Unlined, closed by a magnetic button.



**VIVIANA**

REF : LM0053

Bag size : 34 x 30 x 20 cm  
Unlined.



**DIDINE**

REF : LM0099

Bag size : 50 x 38 x 20 cm  
Unlined, closed with a raffia strap.



**SOLOFO**

REF : LM0057

Bag size : 17 x 17 x 12 cm  
Unlined, closed with a raffia strap, removable shoulder straps in raffia.



**DAFNE**

REF : LM0147

Bag size : 35 x 17 x 13 cm  
Unlined, closed by a magnetic button.



**LISA**

REF : LM0077

Bag size : 22 x 16 x 02 cm  
Cotton lining, zip closure.



**SAIA**

REF : LM0037

Bag size : 30 x 20 x 16 cm  
Unlined, closed by a magnetic button.

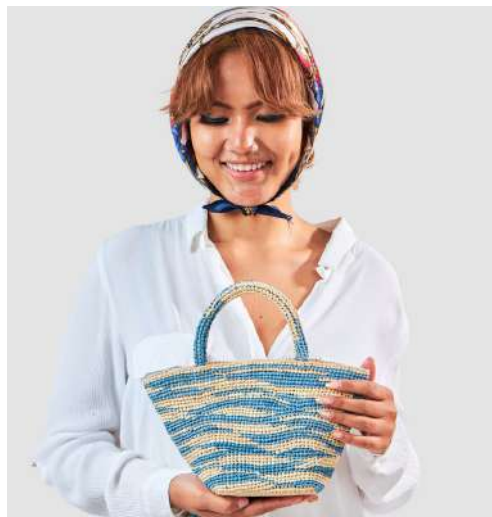


**NIRIA**

REF : LM0105

Bag size : 24 x 16 x 05 cm  
Cotton lining, zip closure.





**VIOLETTE**

REF : LM0071

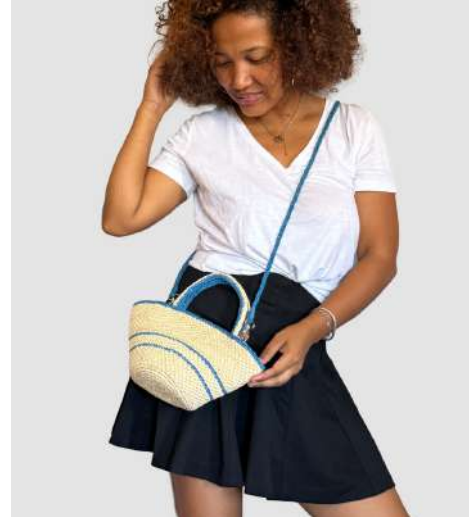
Bag size : 27 x 15 x 08 cm  
Unlined, closed by a magnetic button.  
Removable shoulder straps in raffia.



**NINA**

REF : LM0145

Bag size : 16 x 15 x 6 cm  
Unlined, closed by a magnetic button.



**OLY**

REF : LM0067

Bag size : 29 x 14 x 12 cm  
Unlined, closed by a magnetic button,  
removable shoulder straps in raffia.



**PERLINE**

REF : LM0063

Bag size : 22 x 18 cm  
Unlined, closed by a magnetic button, removable  
shoulder straps in raffia.



**NIVO - S**

REF : LM0074B

Bag size : 28 x 15 x 10 cm  
Unlined, closed by a magnetic button.



**LEA**

REF : LM0047

Bag size : 14 x 20 x 06 cm  
Unlined, closed by a magnetic button,



**LILOU**

REF : LM0123

Bag size : 21 x 15 x 05 cm  
Cotton lining, zip closure.



**RINA**

REF : LM0149

Bag size : 16 x 12 x 8 cm  
Unlined, closed by a magnetic  
button.



**ZOE**

REF : LM0143

Bag size : 21 x 11 x 11 cm  
Unlined, closed by a magnetic  
button.



**IVY**

REF : LM0144

Bag size : 19 x 15 x 5 cm  
Unlined, closed by a magnetic  
button.





**LANA**

REF : LM0154

Bag size : 15 x 12 x 5 cm  
Unlined, closed by a magnetic button.



**MINA**

REF : LM0068

Bag size : 18 x 12 cm  
Unlined, closed by a magnetic button.



**LALY**

REF : LM0080

Bag size : 18 x 12 cm  
Unlined, closed by a magnetic button.



**LATY**

REF : LM0066

Bag size : 18 x 12 cm  
Unlined, closed by a magnetic button.



**MEVA**

REF : LM0122

Bag size : 22 x 14 cm  
Cotton lining, zip closure.



**MIA**

REF : LM0124

Bag size : 23 x 16 cm  
Cotton lining, zip closure.



**SILA**

REF : LM0065

Bag size : 25 x 16 cm  
Cotton lining, zip closure.



REF : LM0015C

Bag size : 20 x 12 x 10 cm  
Unlined, closed by a magnetic button.



**HASINA-S**

REF : LM0040C

Bag size : 16 x 12 x 10 cm  
Unlined.



**IDA**

REF : LM0039C

Bag size : 16 x 12 x 10 cm  
Unlined.



**MAYA-S**

REF : LM0058C

Bag size : 20 x 10 x 10 cm  
Unlined.



**NOMENA - S**

REF : LM0059C

Bag size : 16 x 12 x 10 cm  
Unlined.





**ZOLA**  
REF : LM0114 - A

Head circumference: 56/58  
Edge width: 14  
Head height: 9



**NAURA**  
REF : LM0113

Head circumference: 56/58  
Edge width: 7  
Head height: 9



**ZOLA**  
REF : LM0114 - A

Head circumference: 56/58  
Edge width: 14  
Head height: 9



**LAENA**  
REF : LM0115

Head circumference: 56/58  
Edge width: 7  
Head height: 9



**LILY**  
REF : LM0116

Head circumference: 56/58  
Edge width: 12  
Head height: 9



**SOLENA**  
REF : LM0117

Head circumference: 56/58  
Edge width: 12  
Head height: 9



**LOLITA**  
REF : LM0118

Head circumference: 56/58  
Edge width: 12  
Head height: 9



**NAIA**  
Ref : LM0119

Head circumference: 56/58  
Edge width: 12  
Head height: 9



**NORA**  
REF : LM0120

Head circumference: 56/58  
Edge width: 16  
Head height: 9



# CUSTOMIZATION



Descriptive labels of our products on kraft paper (French and English text) and according to your wishes.

## Standard customization.

You can customize, propose the color, the dimension, and the model of your choice.

We personalize from 5 pieces per style/color.

( color choice according to availability )

## Customization with your brand.

We can also customize the name of your brand on the label from 250 pieces per model with a minimum order.

Due to their handcrafted design, slight variations in color and size may appear.

Every bag is handmade, each product is unique.

# RAFFIA COLORS

ALL OF OUR PRODUCTS CAN BE CUSTOMIZED WITH OUR COLOR PALETTE

AN



BT1



BTH



M1



J1



RR1



RS1



F01



CH3



MO



RR2



VAN



VT2



VT1



T01



TB2



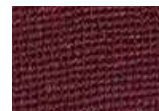
TB3



TB4



UB1



BR1



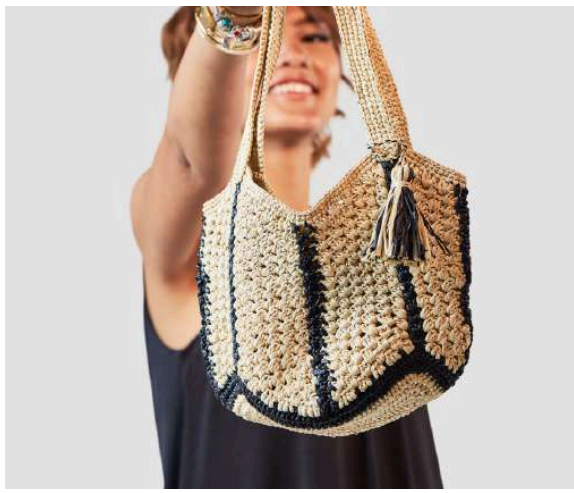
GRS



NN







SEE YOU SOON!